

# Double Dragon II – Stage 1 Theme

Technōs Japan Corp

Arrangement by ElPapiOfItay

♩ = 165



16

A musical score for the song 'The Rose Tree'. It features a grand staff with a treble and bass clef. The melody is written in the bass clef, and the accompaniment is in the treble clef. The key signature has one sharp (F#), and the time signature is 4/4. The melody consists of a series of eighth and quarter notes, with a repeat sign at the end. The accompaniment consists of a simple harmonic pattern in the treble clef.

20

A musical score for the song 'The Rose Tree'. It features a treble and bass staff. The treble staff has a single whole rest in each of the three measures. The bass staff contains the melody, which is written in a simple, folk-like style. The melody consists of eighth and quarter notes, with a key signature of one sharp (F#). The first measure of the bass staff starts with a treble clef, while the second and third measures start with a bass clef. The melody is as follows: Measure 1: G4 (quarter), A4 (quarter), B4 (quarter), C5 (quarter), D5 (quarter), E5 (quarter), F#5 (quarter), G5 (quarter). Measure 2: G5 (quarter), F#5 (quarter), E5 (quarter), D5 (quarter), C5 (quarter), B4 (quarter), A4 (quarter), G4 (quarter). Measure 3: G4 (quarter), A4 (quarter), B4 (quarter), C5 (quarter), D5 (quarter), E5 (quarter), F#5 (quarter), G5 (quarter).

23

A musical score for the song 'The Rose Tree'. It features a treble and bass staff. The treble staff has a key signature of one sharp (F#) and a 3/4 time signature. The melody is written in the treble staff, starting with a whole note G4, followed by a half note A4, and then a quarter note B4. The bass staff provides a harmonic accompaniment, starting with a whole note G2, followed by a half note A2, and then a quarter note B2. The score is divided into three measures by vertical bar lines.

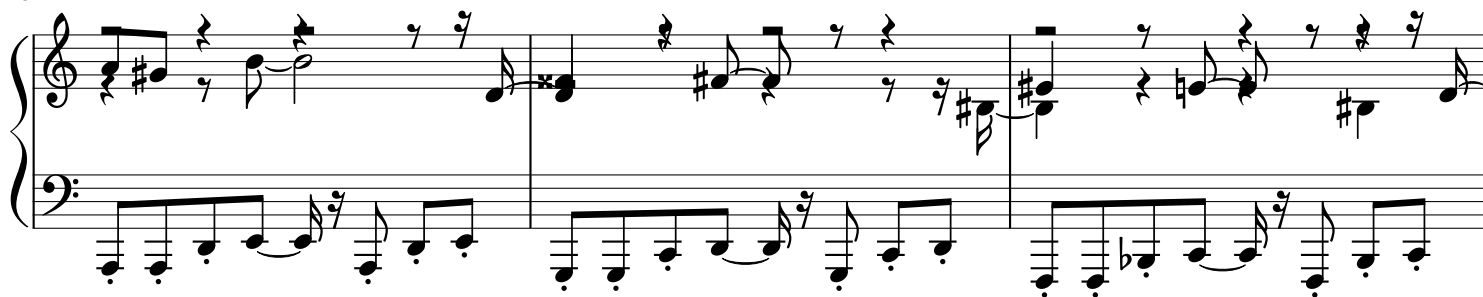
26

A musical score for the song 'The Rose Tree'. It consists of two staves, a treble staff and a bass staff, with a grand staff bracket on the left. The key signature has one sharp (F#), and the time signature is 3/4. The melody is written in the treble staff, and the accompaniment is in the bass staff. The piece is divided into three measures by vertical bar lines. The first measure shows the beginning of the melody and accompaniment. The second measure continues the melody and accompaniment. The third measure shows the end of the melody and accompaniment, with a final double bar line.

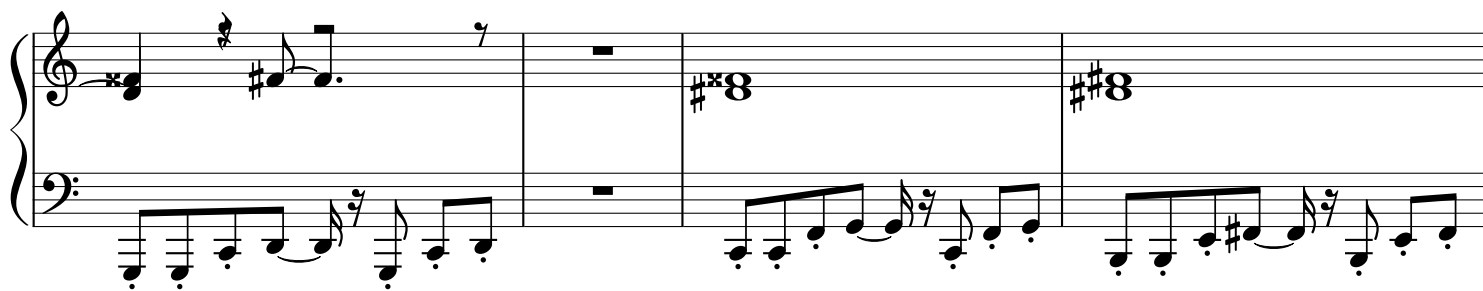
29

A musical score for the song 'The Rose Tree'. It consists of two staves: a treble staff and a bass staff. The treble staff contains a melody with notes G4, A4, B4, C5, B4, A4, G4, F#4, E4, D4, C4, and B3. The bass staff contains a bass line with notes G2, F#2, E2, D2, C2, B1, A1, G1, F#1, E1, D1, and C1. The melody is written in a simple, folk-like style with a key signature of one sharp (F#) and a 2/4 time signature. The bass line is written in a simple, folk-like style with a key signature of one sharp (F#) and a 2/4 time signature. The score is divided into three measures by vertical bar lines.

32



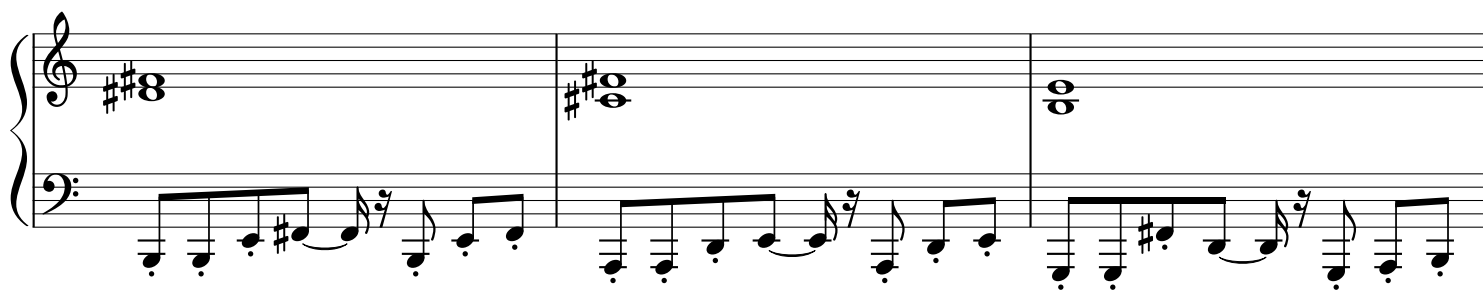
35



39



42



45



48



51



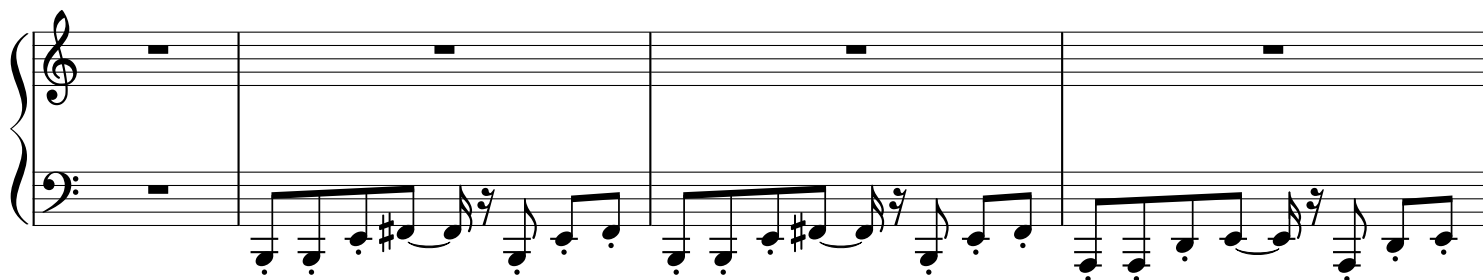
54



57



60



64

A musical score for the song 'The Rose Tree'. The score is written for a piano, with a treble clef on the right and a bass clef on the left. The melody is in the treble clef, and the accompaniment is in the bass clef. The key signature has one sharp (F#), and the time signature is 4/4. The score consists of three measures. The first measure shows the piano introduction with a treble clef, a key signature of one sharp, and a 4/4 time signature. The melody is in the treble clef, and the accompaniment is in the bass clef. The second measure shows the first line of the song, with the melody in the treble clef and the accompaniment in the bass clef. The third measure shows the second line of the song, with the melody in the treble clef and the accompaniment in the bass clef.

67

A musical score for the song 'The Rose Tree'. It consists of two staves: a treble staff and a bass staff. The treble staff has a key signature of one sharp (F#) and a 3/4 time signature. The melody is written in a simple, folk-like style. The bass staff provides a harmonic accompaniment, primarily using chords and single notes. The score is divided into three measures by vertical bar lines. The first measure has a whole rest in the treble and a half note in the bass. The second measure has a whole rest in the treble and a half note in the bass. The third measure has a half note in the treble and a half note in the bass.

70

A musical score for the song 'The Rose Tree'. It consists of two staves, a treble staff and a bass staff, with a brace on the left. The treble staff contains the melody, and the bass staff contains the accompaniment. The key signature has one sharp (F#), and the time signature is 4/4. The melody is written in a simple, folk-like style with eighth and quarter notes. The accompaniment is written in a more complex style with many beamed sixteenth notes. The score is divided into three measures by vertical bar lines.

73

A musical score for the song 'The Rose Tree'. The score is written for a piano, with a treble and bass staff. The key signature is one sharp (F#), and the time signature is 3/4. The melody is in the treble staff, and the accompaniment is in the bass staff. The score consists of three measures. The first measure shows the beginning of the melody and accompaniment. The second measure continues the melody and accompaniment. The third measure shows the end of the melody and accompaniment.

76

A musical score for the song 'The Rose Tree'. The score is written for piano (p) and features a treble and bass staff. The melody is in the treble staff, and the accompaniment is in the bass staff. The key signature is one sharp (F#), and the time signature is 4/4. The melody consists of a series of eighth and sixteenth notes, with some rests. The accompaniment consists of a steady eighth-note pattern in the left hand, with some chords and rests in the right hand. The score is divided into three measures by vertical bar lines.

79

Measures 79-82 of a musical score. Measure 79: Treble clef has a half note G4 with a sharp sign, a quarter note A4 with a sharp sign, and a quarter rest. Bass clef has a half note G2, a half note A2, a quarter note B2, and a quarter note C3. Measure 80: Treble clef has a whole rest. Bass clef has a whole rest. Measure 81: Treble clef has a whole note G4 with a sharp sign and a sharp sign. Bass clef has a half note G2, a half note A2, a quarter note B2, and a quarter note C3. Measure 82: Treble clef has a whole note G4 with a sharp sign and a sharp sign. Bass clef has a half note G2, a half note A2, a quarter note B2, and a quarter note C3.

83

Measures 83-85 of a musical score. Measure 83: Treble clef has a whole note G4 with a sharp sign and a sharp sign. Bass clef has a half note G2, a half note A2, a quarter note B2, and a quarter note C3. Measure 84: Treble clef has a whole note G4 with a sharp sign and a sharp sign. Bass clef has a half note G2, a half note A2, a quarter note B2, and a quarter note C3. Measure 85: Treble clef has a whole note G4 with a sharp sign and a sharp sign. Bass clef has a half note G2, a half note A2, a quarter note B2, and a quarter note C3.

86

Measures 86-88 of a musical score. Measure 86: Treble clef has a whole note G4 with a sharp sign and a sharp sign. Bass clef has a half note G2, a half note A2, a quarter note B2, and a quarter note C3. Measure 87: Treble clef has a whole note G4 with a sharp sign and a sharp sign. Bass clef has a half note G2, a half note A2, a quarter note B2, and a quarter note C3. Measure 88: Treble clef has a whole note G4 with a sharp sign and a sharp sign. Bass clef has a half note G2, a half note A2, a quarter note B2, and a quarter note C3.

89

Measures 89-91 of a musical score. Measure 89: Treble clef has a whole rest. Bass clef has a half note G2, a half note A2, a quarter note B2, and a quarter note C3. Measure 90: Treble clef has a whole rest. Bass clef has a half note G2, a half note A2, a quarter note B2, and a quarter note C3. Measure 91: Treble clef has a whole rest. Bass clef has a half note G2, a half note A2, a quarter note B2, and a quarter note C3.

92

Measure 92 of a musical score. Treble clef has a whole rest. Bass clef has a half note G2, a half note A2, a quarter note B2, and a quarter note C3.